

Figure 2. Amplification profiles of SSRs primers for Bulked Segregant Analysis (BSA): Upper and lower lane arrows indicates *Xipes0027* and *Xpsmp2263* SSRs primers respectively showing polymorphism between the parents and bulks: LP: Low grain iron and zinc content parent (J 2340); HP: High grain iron and zinc content parent (30291); LB: low grain iron and zinc content bulk; HB: high grain iron and zinc content bulk; L: 100 bp ladder

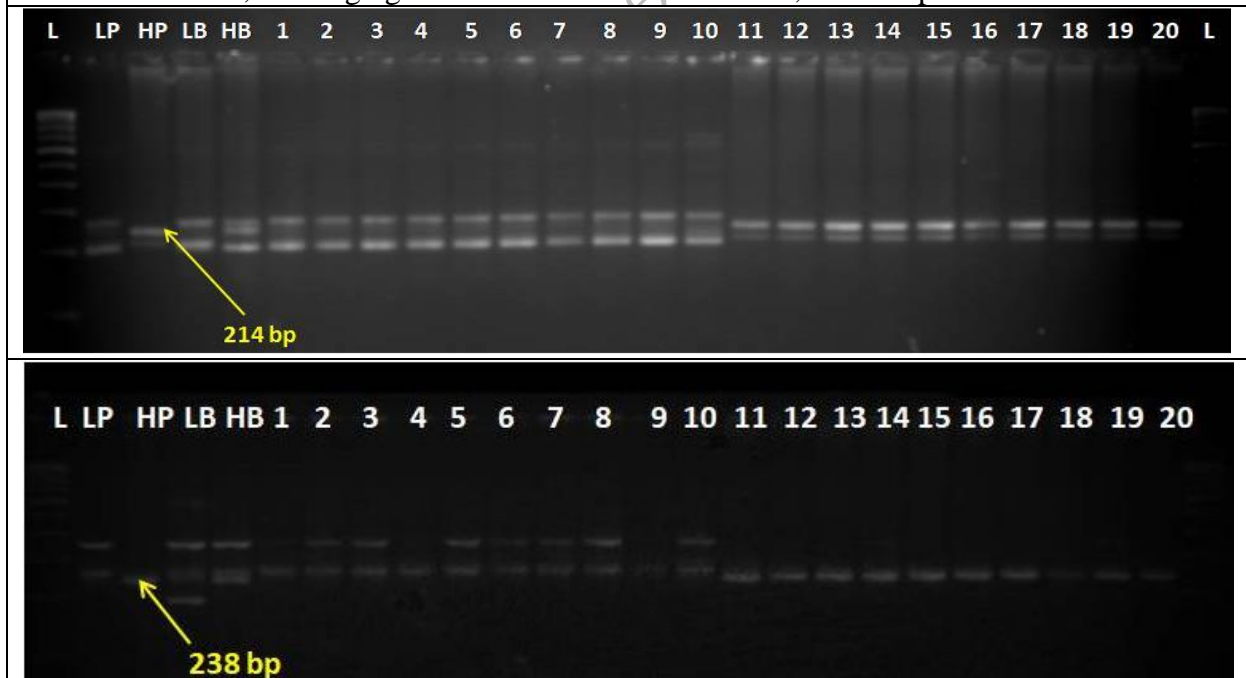


Figure 3. Co-segregation analysis of parents, bulks and F_2 mapping population: Upper and lower lane indicates co-segregation analysis of maker *Xipes0027* and *Xpsmp2263* respectively with parents, bulks and progenies from F_2 mapping population: LP: Low grain iron and zinc content parent (J 2340); HP: High grain iron and zinc content parent (30291); LB: low grain iron and zinc content bulk; HB: high grain iron and zinc content bulk; 1-10 : low grain iron and zinc content F_2 lines; 11-20: high grain iron and zinc content F_2 lines; L: 100 bp ladder