

samples by wet washing. The SEM-EDX study indicates that the original organic matter has been replaced by calcium phosphate during post-mortem alternation. As the host sediments do not contain any phosphate, it is most likely that the fish bones were the source of Ca and P. Introduction of Fe, Si, Al, K and Mg might have taken place at the late diagenetic stage.

1. Hirsch, K. F., in *The Palaeobiology of Trace Fossils* (ed. Donovan, S.), John Wiley and Sons, London, 1994, pp. 269-294.
2. Mikhailov, K. E., Bray, E. S. and Hirsch, K. F., *J. Vert. Pal.*, 1996, 16, 763-769.
3. Chatterjee, S. and Roychowdhury, T., *Indian J. Earth Sci.*, 1974, 1, 96-112.

4. Chatterjee, S., in *The Beginning of the Age of Dinosaurs* (ed. Padian, K.), Cambridge Univ. Press, Cambridge, 1986, pp. 139-149.
5. Hunt, A. P. and Lucas, S. J., *Palaeontology*, 1991, 34, 487-501.
6. Maheswari, H. K. and Kumaran, K. P. N., *Palaeontographica*, 1979, 171, 1-126.

ACKNOWLEDGEMENTS. We thank the Director General, Geological Survey of India for his permission to publish the paper. Sincere thanks are due to T. C. Lahiri, Director, Palaeontology Division, GSI for his constant encouragement and critical evaluation of the manuscript. The authors also thank S. Shome, Geologist (Jr) for his help in SEM-EDX study.

Received 15 December 1997; revised accepted 18 March 1998

Errata

Bioleaching of copper from ferromanganese sea nodule of Indian Ocean

Seema Khan, Rani Gupta and Rajendra Kumar Saxena

[*Curr. Sci.*, 1997, 73, 602-605]

1. Page 605, line 6: Read 'citric acid' instead of 'oxalic acid'. Corrected form: Ninety-one per cent leaching could be achieved with 2% (w/v) citric acid.
2. Page 605. The three types of bars in Figure 2 signify varying incubation periods, i.e. 24 h, 48 h and 72 h.

An improved method for the isolation of supercoiled plasmid DNA

G. Jegadeesh Babu and C. Rajamanickam

[*Curr. Sci.*, 1998, 74, 572-573]

We regret that Figure 1 has been printed upside down. We reproduce the figure as it should correctly appear.

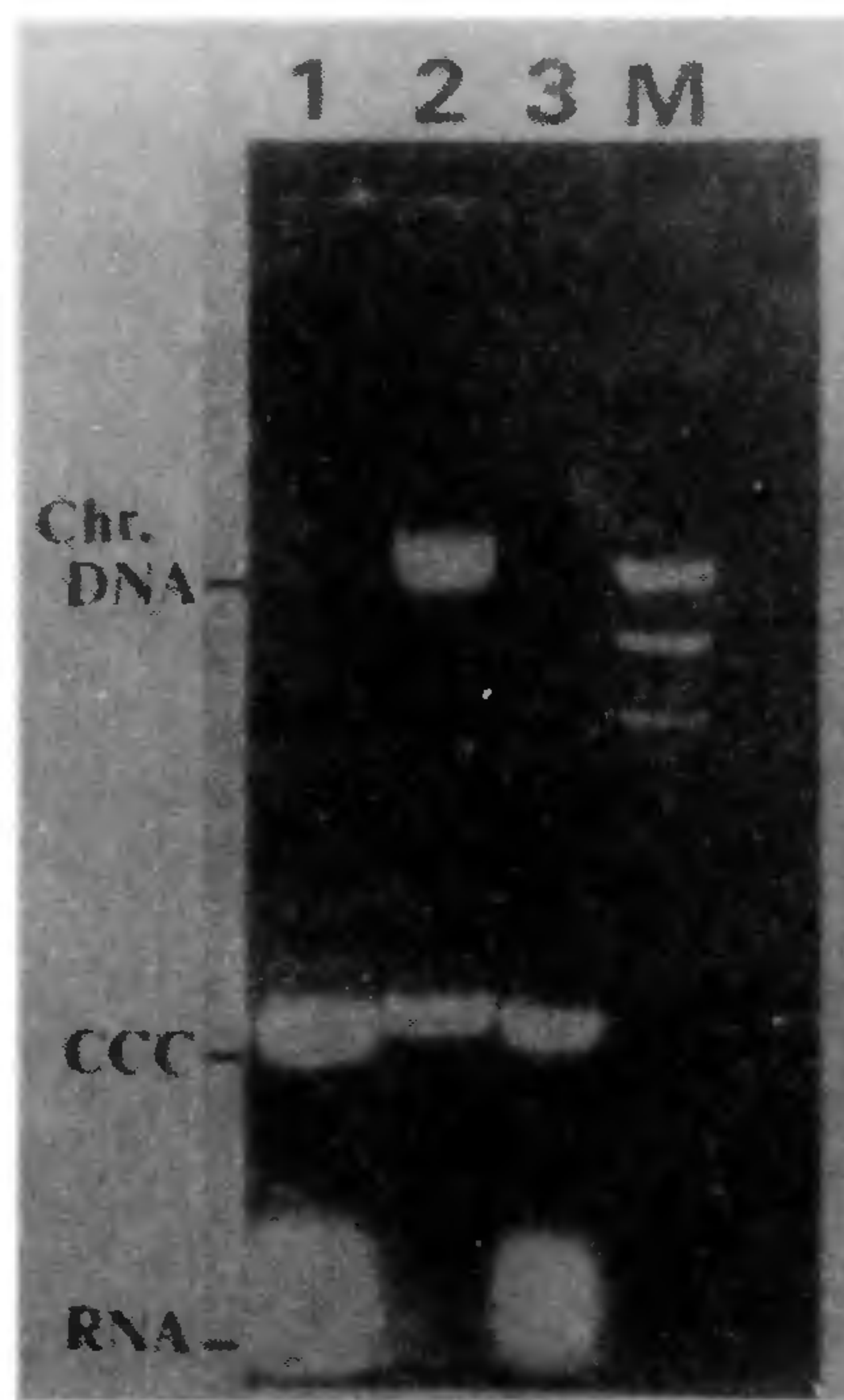


Figure 1. Mini-preparations of pUC 18 plasmid DNA. Plasmids isolated from 1.5 ml culture following different methods were suspended in 30 μ l TE and 5 μ l from each isolate was analysed on 0.7% agarose gel. The lane marked M contains *Hind*III cleaved λ DNA as molecular weight markers. Lane 1, Alkaline lysis method; Lane 2, Boiling method; Lane 3, Method described in this paper.