

1. Cowan, J. M., *The Rhododendron Leaf: A Study of the Epidermal Appendages*, Edinburgh, Oliver and Boyd, 1950.
2. Heintzelmann, C. E. and Howard, R. A., *Am. J. Bot.*, 1948, 35, 42.
3. Hummel, K. and Staesche, K., In *Handbuch der Pflanzenanatomie* Band 4. Teil 5, 1962.
4. Inamdar, J. A., *Proc. Indian Acad. Sci. Sect. B.* 1957, 6, 164.
5. King, S. M. and Robinson, H., *Brittonia*, 1969, 21, 2-4.
6. — and —, *Taxon*, 1970, 19, 769.
7. Metcalfe, H. R. and Chalk, L., *Anatomy of the Dicotyledons*, Oxford, 1950, 2.
8. Murthy, S. N., *Curr. Sci.*, 1941, 5, 257.
9. Solereder, H., *Systematic Anatomy of the Dicotyledons*, Clarendon Press, Oxford, 1908.
10. Uphof, J. C. Th., *Plant hairs*. In Linsbacer, K. (ed.) *Encyclopedia of Plant Anatomy*, Berlin, 1962.

CROWN AND ROOT GALL OF GRAPE (*VITIS VINIFERA*, L.) IN ANDHRA PRADESH

GALL-like formations on the crown and the root system of Anab-e-Sahi grape plantations, 2 years old, were noticed at Kalluru Village of Anantapur District of Andhra Pradesh in August, 1977. The one hectare plantation in the pre-bearing stage was heavily infested with spherical, oblong and convoluted galls as large as 10 cm in size and found in various stages of development (Fig. 1). A majority of vines in this plot was severely affected, resulting in their retarded and unthrifty growth and were stunted and sickly.

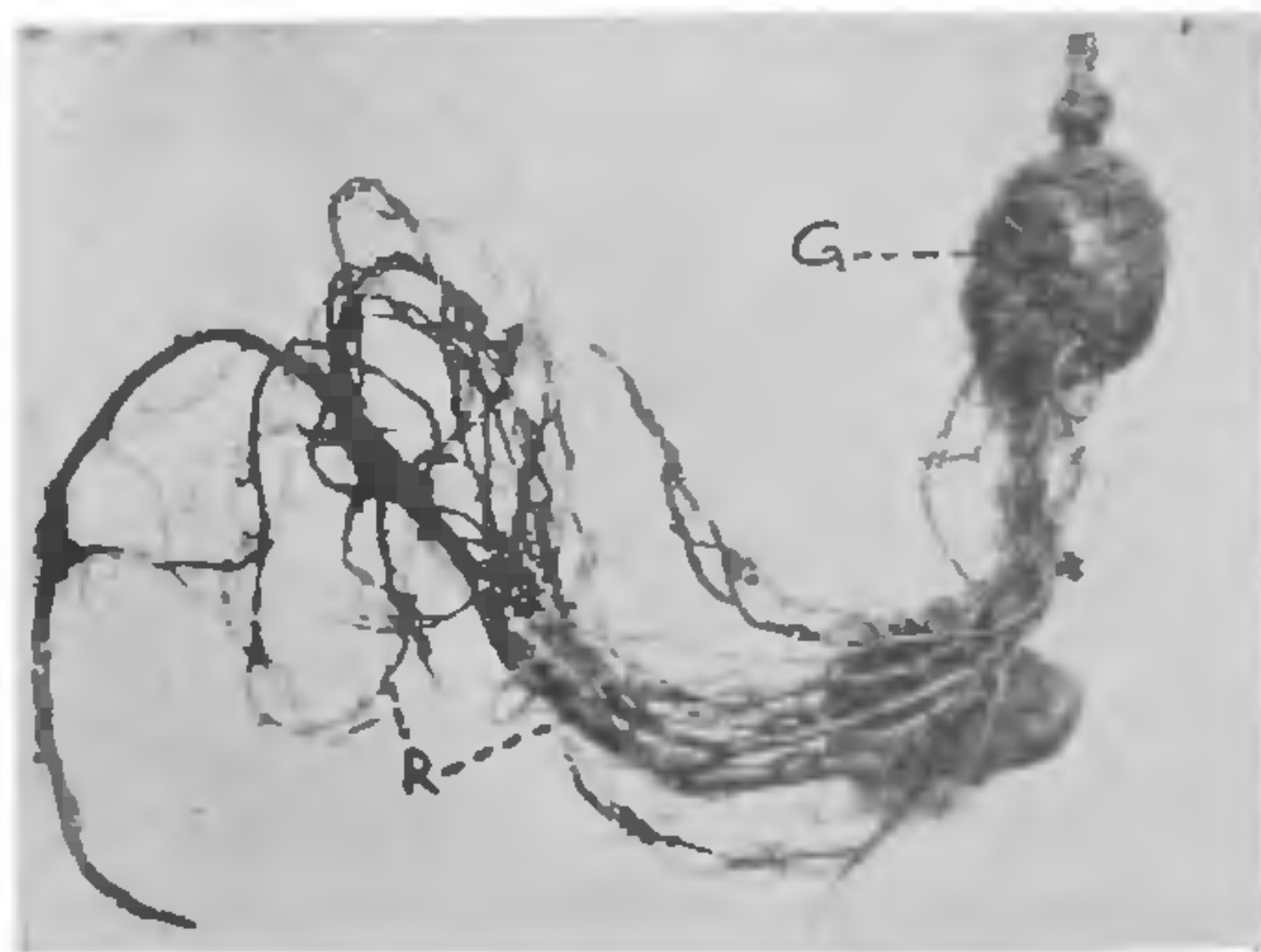


FIG. 1. Crown and root galls in Anab-e-Sahi grapes. G, Gall; R, Roots.

Detailed investigations of the affected plant material, as well as soil samples and morbid anatomy of tissues revealed that (1) The malady is a complex one and

involves several causal agents of different kinds—nematode, bacterium and fungus at various stages of its development and often in synergistic sequence. (2) The initial damage is caused by a reniform nematode (*Rotylenchulus reniformis* Linford and Oliveira), whose population build up was found to be heavy in the soil and from the nature of damage was identified to be the cause of initial crown and root injury. (3) The crown and root galls of variable size appeared to carry within them *Agrobacterium tumefaciens* (E. F. Sm. and Town.) Conn. The galls, especially the young, soft and growing ones (buff to rose pink in colour) contained pockets of frosty tissues full of bacteria, slime and mineral crystals resembling raphides and of characteristic shape (rectangular-rhomboid), whereas older, tumour-like galls had compact, angular and disorganised cells of hard and woody tissue often convoluted externally. Such galls were easily detached in lumps from roots. (4) The secondary and fibrous roots—often growing through the galls—were found to be sloughing and blackened and carried a heavy infection of a fungus (*Fusarium solani* (Mart.) App. & Woll.) in cortical tissues. The fungus is known to cause root rot commonly in many a fruit plant.

It was, thus, evident that the initial root damage by a nematode helped entry of crown gall bacterium and its development, within the root tissues causing galls and the depleted root system was attacked by a root invading fungus present in the soil, finally causing poor and stunted growth of grapevine: Anab-e-Sahi. This variety is fairly well established and widely grown in Andhra Pradesh and other peninsular parts of the country.

Crown gall is most serious, *inter alia*, on grapevine in temperate climatic regions of the world; but its record and damaging effect also in the sub-tropical regions of India appears to be new. The pathogenic agents mentioned above are widely distributed in the soil and can cause substantial damage in syndrome under conditions most favourable for either or all of them. The solution lies in measures like eradication, abandonment and quarantine adopted sooner.

The cultural studies and test experiments are in progress. The authors wish to thank Dr. V. V. Chenulu and Dr. A. R. Seshadri for providing facilities for the work, and to Sri N. Ganapathy of the State Bank of India, Anantapur, A.P., for supply of samples.

Divisions of Mycology and
Nematology,
I.A.R.I., New Delhi 110 012.
January 10, 1978.

V. C. LELE.
I. C. DURGAPAL.
D. K. AGARWAL.
C. L. SETHI.