

CURRENT SCIENCE

Volume 114 Number 2

25 January 2018

242 In this issue

GUEST EDITORIAL

- 243 India's steel industry – *quo vadis***
R. Srikanth

CORRESPONDENCE

- 245 Universities rankings: methodology should be improved**
Alexander Gorobets
- 246 Crested porcupine in the Island of Elba, Italy: native or alien?**
Giuseppe Vecchio, Francesca Coppola, Daniele Scarselli, Francesca Giannini and Antonio Felicioli

NEWS

- 248 Science Last Fortnight**
- 252 2017 UNESCO Sultan Qaboos Prize for Environmental Preservation**
Sameen Ahmed Khan
- 253 Combustion science workshop**
H. S. Mukunda, P. A. Ramakrishna and Arvind Kumar
- 254 High entropy materials**
Krishanu Biswas and N. K. Mukhopadhyay
- 256 Breeding for crop improvement**
V. Praveen Rao

OPINION

- 258 Breaching plant defence theories: growth rates of plants directly impact the evolution of consumption rates of herbivorous insects**
Y. B. Srinivasa

COMMENTARY

- 261 Can altmetrics be used to evaluate research?**
Kuldeep Singh Shekhawat and Arunima Chauhan
- 263 *Arabidopsis* natural variants and the Indian scenario**
Sribash Roy

SCIENTIFIC CORRESPONDENCE

- 266 Asymbiotic seed germination and *in vitro* seedling development of *Paphiopedilum villosum* (Lindl.) Stein, a valuable and vulnerable lady's slipper orchid from India**
Raj Kumar, Mridul Chakraborti, Ngursanzuala Sailo, Tshering Chomu Bhutia and D. R. Singh

- 269 Name confusions in Indian cycads**
M. Venkat Ramana, P. Venu and M. Sanjappa

- 272 *Citrus macroptera* Montrouz var. *annamensis* Tanaka: a potential nutraceutical for ethno-fishery**
Sandeep Acharya
-



GENERAL ARTICLES

- 275 **Introducing a third culture: Carl Djerassi and Roald Hoffmann in theatre**
Harshal Sanjay Pawar and Adrene Freeda D'cruz
- 280 **Changes in capacity of China's agriculture to feed its population**
Yan Zhang, Hong Zhang and Xiaohui Yang

RESEARCH ACCOUNT

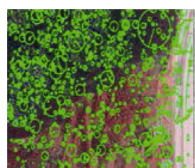
- 292 **The history of liquid metal pump development in India**
R. D. Kale, B. K. Sreedhar and K. V. Sreedharan

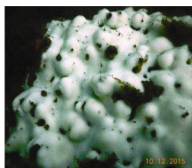
RESEARCH ARTICLES

- 308 **An integrated linearization technique for GaAs bipolar WCDMA power amplifier**
Jagadheswaran Rajendran, Sofiyah Sal Hamid, Shukri Korakkottil Kunhi Mohd, Mohd Zaid Abdullah, Harikrishnan Ramiah and Narendra Kumar
- 314 **Towards generation of effective 3D surface models from UAV imagery using open source tools**
P. S. Singh, Mayuri Sharma, Victor Saikhom, Dibyajyoti Chutia, Chirag Gupta, Avinash Chouhan and P. L. N. Raju
- 322 **Assessment of spatial variations in temperature and precipitation extremes in west-flowing river basin of Kutch, Saurashtra and Marwar, India**
Ila Agnihotri, M. P. Punia and J. R. Sharma
- 329 **Genome-wide consistent molecular markers associated with phenology, plant production and root traits in diverse rice (*Oryza sativa* L.) accessions under drought in rainfed target populations of the environment**
Vivek Deshmukh, Sumeet Prabakar Mankar, C. Muthukumar, P. Divahar, A. Bharathi, Helen Baby Thomas, Ashish Rajurkar, Reena Sellamuthu, R. Poornima, S. Senthivel and R. Chandra Babu
- 341 **An observer-based fault-tolerant controller for flexible buildings-based on linear matrix inequality approach**
Chaojun Chen, Zuohua Li, Jun Teng and Ying Wang
- 355 **Quantification of regional and global sustainability based on combined resource criticality of land and water**
Prashant Goswami and Shivnarayan Nishad

RESEARCH COMMUNICATIONS

- 367 **First lasing in an infrared free electron laser at RRCAT, Indore**
K. K. Pant, Vinit Kumar, Bhaskar Biswas, Arvind Kumar, Shankar Lal, Sona Chandran, Saket Kumar Gupta, Md. Khursheed, Pravin Nerpagar, A. K. Sarkar, Ravi Kumar Pandit, K. Ruwali, K. Sreeramulu, S. Das, R. S. Shinde, S. Chouksey, J. K. Parate, Viraj Bhanage, P. P. Deshpande, Shradha Tiwari, Mandar Joshi, Lalita Jain, Anand Valecha, Ayukt Pathak, M. A. Ali, H. R. Bundel, Purushottam Shrivastava, T. Reghu, Umesh Kale, Yashwant Wanmode, Praveen Mohania, Jaikishan Mulchandani, Akhil Patel, Mahesh Acharya, Ashish Mahawar, Mahendra Lad, M. K. Jain, Nitesh Tiwari, Pritam S. Bagduwal, V. G. Sathe, Sujata Joshi, Ram Shiroman, A. S. Yadav, Randhir Kumar, Alok Singh, Vineet K. Dwivedi, Mangesh Borage and S. R. Tiwari
- 374 **Imaging of stratified media using high-speed swept source optical coherence tomography**
Maddipatla Reddikumar and Raju Poddar
- 378 **The adsorption capacity of the base layer of pervious concrete pavement prepared with additives for typical runoff pollutants**
Wang Junling, Wei Jiangtao, Wang Xueming, Feng Cuimin, Chen Tao, Sun Lihua and Li Junqi





- 384 **Climate change-induced coral bleaching in Malvan Marine Sanctuary, Maharashtra, India**
K. Diraviya Raj, G. Mathews, M. Selva Bharath, Rohit D. Sawant, Vishal Bhawe, Deepak Apte, N. Vasudevan and J. K. Patterson Edward
- 387 **Dichogamy and style curvature avoid self-pollination in *Eremurus altaicus***
Wei Gu, Miao Ma and Jun-Feng Fan
- 391 **Antiproliferative and antibacterial activity of some *para*-substituted benzylideneacetophenones and establishing their structure activity relationship**
Deepak Chowrasia, Nisha Sharma, Ajay Kumar, Vinod Dohrey, Md. Arshad, Asif Jafri, Juhi Rais, Madhu Gupta and Sahabjada

BOOK REVIEWS

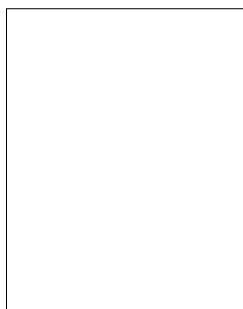
- 397 **Principles of Radiometric Dating** by Kunchithapadam Gopalan, *reviewed by* Jyotiranjana S. Ray
- 398 **Annual Review of Entomology, 2017**, May R. Berenbaum, Ring T. Cardé and Gene E. Robinson (eds), *reviewed by* S. Ramani

PERSONAL NEWS

- 401 **Lalji Singh (1947–2017)**
K. Thangaraj
- 403 **Arun Kumar Sharma (1924–2017)**
Umesh C. Lavania

ACADEMY NEWS

- 405 **Indian Academy of Sciences announces Fellows for 2018**
-



- ◀ **COVER.** Common milkweed butterfly feeding on the leaves of the calatropis plant. The interaction between the milkweed butterfly and the calatropis plant is one of the more famous stories narrated while teaching students about the relationship between plants and herbivorous insects (Photo courtesy: Mr D. N. Nagaraj). See page 258.

Indexed in CURRENT CONTENTS/GEOTitles/CHEMICAL ABSTRACTS/IndMED/SCOPUS/
WEB OF SCIENCE