

CURRENT SCIENCE

Volume 113 Number 5

10 September 2017

830 In this issue

GUEST EDITORIAL

- 831 Revamping higher education**
S. K. Saidapur
-

CORRESPONDENCE

- 833 Rigorous enforcement of policy crucial to enhance scientific integrity,** Govindasamy Agoramoorthy ■ **834 Copycats and impostors in science publishing: the case of *Current Science*,** Jaime A. Teixeira da Silva ■ **835 Food and nutritional security,** P. K. Gupta; *Response by* M. S. Swaminathan
-

NEWS

- 837 Science Last Fortnight** ■ **841 World Ozone Day,** S. Priya ■ **842 India International Science Festival 2016,** Shilpa Pandey and Md. Firoze Quamar ■ **843 Green chemistry and engineering for sustainable development,** Malti Goel ■ **844 Monitoring the spread and management of *Tuta absoluta*,** Amer Fayad and Abhijin Adiga
-

OPINION

- 846 Climate change and human–wildlife conflicts in the Indian Himalayan biodiversity hotspot**
Nishikant Gupta, Asha Rajvanshi and Ruchi Badola
-

COMMENTARY

- 848 Transforming Indian agriculture: is doubling farmers' income by 2022 in the realm of reality?**
R. Sendhil, P. Ramasundaram and S. J. Balaji
- 851 A temporal analysis of the word 'impact' in titles published in *Current Science* between 1934 and 2015: to what impact?**
R. Uma Shaanker
-

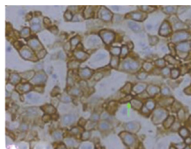
SCIENTIFIC CORRESPONDENCE

- 853 Citation indices and dimensional homogeneity,** Gangan Prathap ■ **855 *Datura discolor* Bernh. (Solanaceae), an overlooked species in India,** Bhagyashri B. Kumbhalkar and Mayur D. Nandikar ■ **857 Safflower (*Carthamus tinctorius* L.) – an underutilized leafy vegetable,** Vrijendra Singh, R. R. Jadhav, G. E. Atre, R. V. Kale, P. T. Karande, K. D. Kanbargi, N. Nimbkar and A. K. Rajvanshi ■ **858 Temporal variation of phytoplankton assemblage in estuarine waters: implication of cyclone *Phailin*,** S. K. Baliarsingh, Suchismita Srichandan, Aneesh A. Lotliker, M. F. Gracia-Escobar, Madhusmita Tripathy, K. C. Sahu and T. Srinivasa Kumar
-

GENERAL ARTICLE

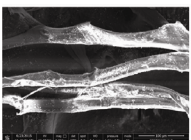
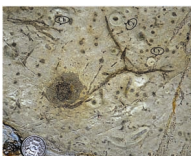
- 861 Need for regulatory policies in India, on the use of bisphenol A in food contact plastic containers**
Duraisamy Mahamuni and Nirmaladevi Dhandayudapani Shrinithiviahshini
-





RESEARCH ARTICLES

- 869 **A new magnetic resonance imaging probe specifically targeting vascular endothelial growth factor receptor 2: synthesis, characterization and biological evaluation**
Xiaoguang You and Yikai Xu
- 877 **Co-registration of LISS-4 multispectral band data using mutual information-based stochastic gradient descent optimization**
S. Manthira Moorthi, D. Dhar and R. Sivakumar
- 889 **Wave-generated structures in the Siwalik rocks of Tista valley, eastern Himalaya: implication for regional palaeogeography**
Suchana Taral, Nandini Kar and Tapan Chakraborty
- 902 **A comparative assessment of the seismic response of an earthen dam using analytical simulation and empirical methods**
Srijit Bandyopadhyay, Raj Banerjee, Aniruddha Sengupta, Y. M. Parulekar and G. R. Reddy
- 911 **Material and energy balance calculations for commercial production of whole neem fruit powder using particle-size distribution and energy models**
Sonali Tajane, Praful Dadhe, Krishna Kanth Chole, Sachin Mandavgane and Sayaji Mehetre
- 919 **Physico-chemical studies on raw and processed moth caterpillar silks from the mega-biodiversity hotspots of India**
Pramod C. Mane, Nilam M. Qureshi, Manish D. Shinde, Sandesh R. Jadkar, Dinesh P. Amalnerkar and Ravindra D. Chaudhari
- 927 **Estimation of free speed of pedestrian flow on stairways at busy suburb rail transit station in India**
Shah Jiten, Joshi Gaurang, Arkatkar Shriniwas and Parida Purnima

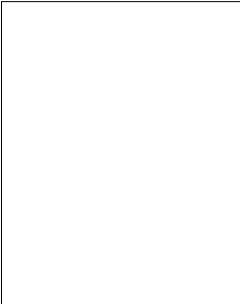


RESEARCH COMMUNICATIONS

- 938 **Physico-chemical and tribological studies of *Argemone* biodiesel synthesized using microwave technique**
Shilpi Agarwal, Vijay K. Chhibber, Ajay K. Bhatnagar, Bhawana Srivastav, Amit Kumar, Shailey Singhal and Amit K. Sharma
- 941 **Isolation and structural elucidation of an isothiocyanate compound from *Indigofera tinctoria* Linn. extract**
Veena Sharma and Rashmi Singh
- 946 **Callus-mediated organogenesis in *Lilium polyphyllum* D. Don ex Royle: a critically endangered Astavarga plant**
G. S. Panwar, S. K. Srivastava and P. L. Uniyal
- 951 **Development of lifetime milk yield equation using artificial neural network in Holstein Friesian crossbred dairy cattle and comparison with multiple linear regression model**
Manisha Dinesh Bhosale and T. P. Singh
- 955 **Pliocene Indonesian Throughflow change and planktic foraminiferal diversity in the eastern subtropical Indian Ocean**
Ajai Kumar Rai, Vishwesh K. Pathak, Lakshmi K. Sharma and Ajhar Hussain
- 959 **Anthropogenic drivers shift diatom dominance–diversity relationships and transparent exopolymeric particles production in River Ganga: implication for natural cleaning of river water**
Usha Pandey, Jitendra Pandey, Anand V. Singh and Abha Mishra



- 965 **Sponge-associated bacterium, *Yangia pacifica*: a potential candidate for bioremediation of azo dyes**
N. S. Subina, Shanta Nair and Maria-Judith Gonsalves
- 969 **Hearing impairment of Indian agricultural tractor drivers**
Abhijit Khadatkar, C. R. Mehta, L. P. Gite, B. S. Narwariya and Anup Kumar
- 974 **Face recognition using a hybrid SVM–LBP approach and the Indian movie face database**
Francisco A. Pujol, Antonio Jimeno-Morenilla and José Luis Sánchez-Romero
-
- BOOK REVIEW**
- 978 **Advances in Clinical Chemistry, Vol. 79** by Gregory S. Makowski (ed.), *reviewed by* S. Chandrasekhar
-
- PERSONAL NEWS**
- 979 **Udupi Ramachandra Rao (1932–2017)**
K. Kasturirangan and George Joseph
- 982 **Maryam Mirzakhani (1977–2017)**
Sameen Ahmed Khan
-
- HISTORICAL NOTES**
- 984 **Large-scale iron and steel production in the Coromandel: the earliest and longest survived Porto Novo Iron Works (1830–1859)**
Anantanarayanan Raman
-

- 
- ◀ COVER. Alternation of mudstone with wave-rippled siltstone beds in the middle part of the Siwalik succession, Gish River section, north Bengal. Note symmetrical ripple forms with internal strata showing wave-generated features like bundled up-building, form discordance and bidirectional foresets. See page 889.

Indexed in CURRENT CONTENTS/GEODATA/CHEMICAL ABSTRACTS/IndMED/SCOPUS/
WEB OF SCIENCE