

CURRENT SCIENCE

Volume 111 Number 12

25 December 2016

1890 In this issue

GUEST EDITORIAL

- 1891 Earth Sciences for societal and economic benefits**
M. Rajeevan

CORRESPONDENCE

- 1893 Recent forest fire in Uttarakhand**
S. P. Sati and Navin Juyal
- 1894 Language families in India**
S. Thomas; *Response by* Debapriya Sengupta

NEWS

- 1895 Science Last Fortnight**
- 1897 Shanti Swarup Bhatnagar Prize for Science and Technology 2016**
- 1901 Infosys prize in physical science**
R. Sridharan
- 1903 Communicating through visible light: internet of things perspective**
Partha Pratim Ray

RESEARCH NEWS

- 1906 Folk medicine meets metabolomics and public health**
Pavithra P. Nayak and H. M. Mahadeva Swamy

COMMENTARY

- 1908 Undergraduate research in physics: an Indian perspective**
Sushan Konar

SCIENTIFIC CORRESPONDENCE

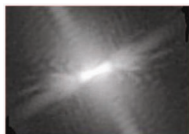
- 1911 Effect of environmental temperature on the isolation of *Mycobacterium tuberculosis* from sputum samples stored in cetylpyridinium chloride**
Dasarathi Das and Bhagirathi Dwibedi
- 1912 Perspectives for geoscience in India**
Shailesh Nayak
- 1914 Unique geological and geomorphic features of River Ken with a bedrock channel**
Brij Gopal
- 1917 Gold and uranium occurrences in quartz-pebble conglomerate of Iron Ore Group, Bagiyabahal–Baratangra area, Sundargarh district, Odisha, India**
Ashim Jana, B. C. Sarkar, Suresh Kumar, Ajay Kumar, G. S. Yadav and Pramod Kumar
- 1921 The *Pollu* beetle in Andamans – do several lies make a truth?**
S. Ramani

GENERAL ARTICLES

- 1924 Publication delay of manuscripts in periodicals published by CSIR-NISCAIR**
K. C. Garg



- 1929 **Eco-technologies for agricultural and rural livelihoods in North East India**
Prasanna K. Samal, Er. Mahendra S. Lodhi, Satish C. Arya, Rakesh C. Sundriyal and Pitambar P. Dhyani



- REVIEW ARTICLES**
- 1936 **Extracting cell and fibre orientation from microscopic images: computational methods and tools**
Medha Sharma
- 1946 **Sustainable options for mitigation of major toxicants originating from electronic waste**
Amrik Bhattacharya and S. K. Khare

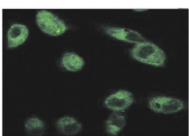
RESEARCH ARTICLES

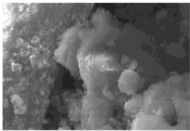
- 1955 **Livestock farming in the Uttarakhand Himalaya, India: use pattern and potentiality**
Vishwambhar Prasad Sati
- 1961 **Amelioration of soybean plant from saline-induced condition by exopolysaccharide producing *Pseudomonas*-mediated expression of high affinity K^+ -transporter (*HKT1*) gene**
Amrita Kasotia, Ajit Varma, Narendra Tuteja and Devendra Kumar Choudhary
- 1968 **Non-organic solid wastes – potential resource for construction materials**
B. V. Venkatarama Reddy, H. Hemanth Kumar, S. N. Ullas and K. Gourav
- 1977 **Estimation of glacier mass balance on a basin scale: an approach based on satellite-derived snowlines and a temperature index model**
S. A. Tawde, A. V. Kulkarni and G. Bala
- 1990 **Effect of submarine canyons on tsunami heights, currents and run-up off the southeast coast of India**
Jaya Kumar Seelam, R. Mani Murali and T. E. Baldock



RESEARCH COMMUNICATIONS

- 2005 **Directed rotational motion of birefringent particles by randomly changing the barrier height at the threshold in a washboard potential**
Basudev Roy and Erik Schäffer
- 2008 **Greener production of magnetic nanoparticles and their fabrication**
Ashima Sharma and Kavita Tapadia
- 2014 **Speckle-type POZ protein acts as a predictive biomarker for mTOR target therapy in renal cell carcinoma**
Ashutosh Chauhan, Rani Ojha, Deepak Kumar Semwal, Satyendra Prasad Mishra and Ruchi Badoni Semwal
- 2020 **Solar-powered evaporatively cooled vegetable vending cart**
D. V. K. Samuel, P. K. Sharma and J. P. Sinha
- 2022 **Development of ELISA exploring recombinant variable surface glycoprotein for diagnosis of surra in animals**
P. P. Sengupta, M. Ligi, G. R. Rudramurthy, V. Balamurugan and H. Rahman
- 2028 ***In vitro* evaluation of the antimalarial activity of a designed novel quinuclidine derivative**
Rupanjali Sharma, Amrit Goswami, Mithun Rudrapal, Dipsikha Sharma, Hemanta Kumar Sharma and Dipak Chetia
- 2031 **Permeability of *Aloe vera* composite coatings and their effect on quality of peeled carrots**
Sonu Panwar, Bhawana Mishra and Preeti Goyal





- ◀ **2035 Effect of ultra graphite application on morphological and physico-chemical properties of red soil**

A. Mohamed Haroon Basha, Rathinam Chandramohan, Pandian Kannan, P. Perinbam and Muthupandian Ganesan

- 2040 Ancient Indians (Harappan settlement) were aware of tsunami/storm protection measures: a new interpretation of thick walls at Dholavira, Gujarat, India**

R. Nigam, R. Dubey, R. Saraswat, Sundaresh, A. S. Gaur and V. J. Loveson



- ◀ **2044 Incidence of aggressive territoriality between two ant species: *Camponotus compressus* Fab. and *Oecophylla smaragdina* Fab. (Hymenoptera: Formicidae)**

Viyolla Pinto, M. S. Reddy, M. Pratheepa and Abraham Verghese

BOOK REVIEW

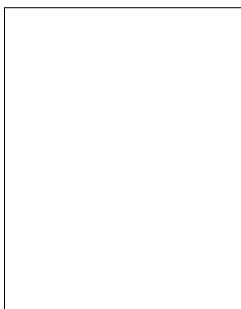
- 2047 Romance of Innovation: Human Interest Story of R&D in Rural Setting** by Anil K. Rajvanshi, *reviewed by* K. S. Jayaraman

PERSONAL NEWS

- 2048 Emilio Gatti (1922–2016)**

Mohan G. Phadnis

-
- 2050 Institutional Members**
-



- ◀ **COVER.** *Oecophylla* nest on the new flush of inflorescence. See page 2044.

Indexed in CURRENT CONTENTS/GEOTitles/WEB OF SCIENCE