

# CURRENT SCIENCE

Volume 111 Number 8

25 October 2016

**1282 In this issue**

**GUEST EDITORIAL**

- 1283 Ecological wisdom in the new urban era**  
Harini Nagendra

**CORRESPONDENCE**

- 1285 Selection of brand names for a drug by Indian pharmaceutical companies,** S. Tanya, K. M. Arbind and Virendra S. Ligade ■ **1286 Detecting disguised plagiarism,** G. Mahesh ■ **1287 Grafted papayas: a boon for dioecious papaya industry,** S. Senthilkumar, N. Kumar, K. Soorianathasundaram and K. Arun Kumar ■ **1288 CO<sub>2</sub> levels and coral reefs,** Ritika Verma, Anil Kumar and Sudhir Kumar

**NEWS**

- 1289 2016 Nobel Prize in Chemistry: conferring molecular machines as engines of creativity,** N. Jayaraman ■ **1293 Nobel Prize in Physics 2016,** T. V. Ramakrishnan ■ **1294 Nobel Prize in Physiology or Medicine 2016,** Shekhar C. Mande ■ **1296 Stratospheric aerostat – a new high altitude scientific platform,** Jun Li, Mingyun Lv, Kangwen Sun and Yuanyuan Zhang ■ **1297 Indian government unveils National Disaster Management Plan, 2016,** Anasua Mukherjee Das ■ **1298 For the students, by the students – YETI 2016,** Rishi Kumar, Krishnendu Mondal, Keshab Gogoi and Kamalika Bhattacharyya ■ **1300 Science Last Fortnight**

**RESEARCH NEWS**

- 1302 Borophene: a new paradigm!**  
Sanjoy Mukherjee and Pakkirisamy Thilagar
- 1305 The inscrutable monsoon?**  
Arindam Chakraborty

**COMMENTARY**

- 1307 DST WOS-A: the scenario from recipient's perspective**  
Rupali Gangopadhyay and Bidisa Das
- 1309 Seismic threat to the Chitwan and Hetauda Duns, Central Nepal**  
Ananya Divyadarshini and Vimal Singh

**SCIENTIFIC CORRESPONDENCE**

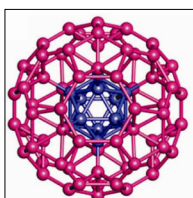
- 1311 *Nepenthes khasiana* Hook. f. (Nepenthaceae) from Assam**  
Albert Lalduhawma Sajem Betlu

**GENERAL ARTICLE**

- 1312 Expansion of sericulture in India using geospatial tools and web technology**  
B. K. Handique, P. T. Das, J. Goswami, C. Goswami, P. S. Singh, C. J. Prabhakar, C. M. Bajpeyi and P. L. N. Raju

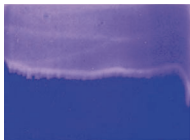
**REVIEW ARTICLES**

- 1319 Plant Wnt: deciphering a novel signalling pathway in plants**  
Joy Das and Rakesh Kumar



- 1325 **Methoxybenzaldehydes in plants: insight to the natural resources, isolation, application and biosynthesis**  
Anish Kundu and Adinpunya Mitra

- 1335 **Homologous DNA repair: safeguarding genome territories from knives**  
Saba Abass, Warda Fatima and Saqib Mahmood



---

**RESEARCH ARTICLES**

- 1340 **Application of transverse urea gradient zymography for structural and functional characterization of proteolytic enzymes**  
Kanika Sharma and Debasish Bhattacharyya

- 1349 **Effect of flow velocity on chlorine decay in water distribution network: a pilot loop study**  
Priyanka Jamwal and M. S. Mohan Kumar

- 1355 **Variability in physico-chemical characteristics and selection of superior types among local pummelo (*Citrus grandis* (L.) Osbeck) germplasm from Mizoram, North East India**  
T. K. Hazarika, Lalthlamuani, Jonathan Lalchhanmawia, Lalrinfeli and B. P. Nautiyal

---

**RESEARCH COMMUNICATIONS**

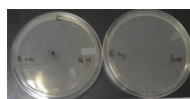
- 1362 **Excellence mapping of successful universities and research-focused institutions in India**  
Gangan Prathap



- 1364 **Light-regulatory effect on the phytosynthesis of silver nanoparticles using aqueous extract of garlic (*Allium sativum*) and onion (*Allium cepa*) bulb**  
Preeti Rajoriya, Pragati Misra, Pradeep Kumar Shukla and Pramod W. Ramteke

- 1368 **Ameliorative effects of the homeopathic medicine Lycopodium 200c and extract of *Phyllanthus emblica* in cadmium-induced neurotoxicity in mice**  
Mahasweta Chatterjee, Anupama De, Gobinda Chandra Sadhukhan and Jayanta Kumar Kundu

- 1371 **Evaluation of inorganic fractions of arsenic in relation to soil properties in affected areas of West Bengal, India**  
G. C. Banik and S. K. Sanyal



- 1377 **Synthesis of nano-porous carbon from cellulosic waste and its application in water disinfection**  
A. Carmalin Sophia, Harjeet Nath and N. V. S. Praneeth

- 1383 **Assessment of GMean biological soil quality indices under conservation agriculture practices in rainfed Alfisol soils**  
K. L. Sharma, Ch. Srinivasa Rao, D. Suma Chandrika, N. Nandini, Munnalal, K. Sammi Reddy, A. K. Indoria and T. Satish Kumar



- 1387 **Multi-pronged search for palaeo-channels near Konark Temple, Odisha – implications for the mythical river Chandrabhaga**  
Subhamoy Jana, William Kumar Mohanty, Saibal Gupta, Chirashree Srabani Rath, Rashmi R. Behera and Priyadarshi Patnaik

- 1393 **A student-centric research and education programme on heavy metal pollution of water bodies from selected Indian cities**  
Mala Das Sharma, Archana Juyal, Karuna Mantha and Subrata Das Sharma

- 1400 **Repertoires and geographical variation in song of oriental magpie robin (*Copsychus saularis*) in northern Thailand**  
Anirut Danmek and Narit Sitasuwan
-

### BOOK REVIEWS

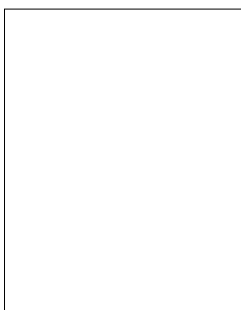
- 1407 **Annual Review of Nuclear and Particle Science, 2015**, Barry R. Holstein, Wick C. Haxton and Abolhassan Jawahery (eds), *reviewed by* B. Ananthanarayan
- 1409 **Indian Forester, Scottish Laird: The Botanical Lives of Hugh Cleghorn of Stravithie; and The Cleghorn Collection: South Indian Botanical Drawings, 1845 to 1860**, Henry J. Noltie, *reviewed by* Anantanarayanan Raman
- 1412 **From Soup to Superstar: The story of sea turtle conservation along the Indian coast**, Kartik Shanker, *reviewed by* Karpagam Chelliah
- 

### PERSONAL NEWS

- 1414 **B. C. Nakra (1939–2016)**  
Subir Kumar Saha
- 

### HISTORICAL NOTES

- 1415 **S. Chandrasekhar equals with Newton, Laplace, Gauss and Einstein – C. V. Raman's opinion and the Physics Nobel Prize nomination**  
Rajinder Singh
- 



- ◀ COVER. Made to order molecular machines convert energy in the form of either light or heat or electrochemical input activates the molecular components to move in one direction, so as to make a useful work output. See page 1289.

Indexed in CURRENT CONTENTS/GEODATABASE/CHEMICAL ABSTRACTS/IndMED/SCOPUS/  
WEB OF SCIENCE