

exceed the 2.7% threshold recommended by Hebert *et al.*², even for the *A. cinerea*–*A. herodias*–*A. cocoi* complex. The aim of this study is not the phylogeography of birds of the family Ardeidae, but to verify the robustness of mitochondrial markers in delineating species with worldwide distribution. Whether these sequence divergences are evolutionarily significant needs to be further analysed on a larger sample set taking into consideration more stringent criteria. Although our results are preliminary and based on few samples and sequences available in the database, they justify the need for further investigation into these species with extensive geographical sampling.

1. Hebert, P. D. N., Cywinska, A., Ball, S. L. and Dewaard, J. R., Biological identification through DNA barcodes. *Proc. R. Soc. London, Ser. B.*, 2003, **270**, 313–322.
2. Hebert, P. D. N., Stoeckle, M. A., Zemplak, T. S. and Francis, C. M., Identification of birds through DNA barcodes. *PLoS Biol.*, 2004, **2**, 1657–1663.
3. Yoo, H. S. *et al.*, DNA barcoding of Korean birds. *Mol. Cells*, 2006, **22**, 323–327.
4. Kerr, K. C. R., Stoeckle, M. Y., Dove, C. J., Weigt, L. A. and Francis, C. M., Comprehensive DNA barcode coverage of North American birds. *Mol. Ecol. Notes*, 2007, **7**, 535–543.
5. Johnsen, A. *et al.*, DNA barcoding of Scandinavian birds reveals divergent lineages in trans-Atlantic species. *J. Ornithol.*, 2010, **151**, 565–578.
6. Tavares, E. S. and Baker, A. J., Single mitochondrial gene barcodes reliably identify sister-species in diverse clades of birds. *BMC Evol. Biol.*, 2008, **8**, 81; doi:10.1186/1471-2148-8-81.
7. Kerr, K. C. R., Lijtmaer, D. A., Barreira, A. S., Hebert, P. D. N. and Tubaro, P. L., Probing evolutionary patterns in Neotropical birds through DNA barcodes. *PLoS ONE*, 2009, **4**, e4379 1–6.
8. Verma, S. and Singh, L., Novel universal primers establish identity of an enormous number of animal species for forensic application. *Mol. Ecol. Notes*, 2003, **3**, 28–31.
9. Ali, S., *The Book of Indian Birds*, Oxford University Press, New Delhi, 2002, 13th revised edn.
10. Clements, J. F., *The Clements Checklist of Birds of the World*, Cornell University Press, Ithaca, 2007, 6th edn.

11. Sambrook, J., Fritsch, E. F. and Maniatis, T., *Molecular Cloning: A Laboratory Manual*, Cold Spring Harbor Laboratory, Cold Spring Harbor Laboratory Press, NY, 1989, 2nd edn.
12. Folmer, O., Black, M., Hoeh, W., Lutz, R. and Vrijenhoek, R., DNA primers for amplification of mitochondrial cytochrome *c* oxidase subunit I from diverse metazoan invertebrates. *Mol. Mar. Biol. Biotechnol.*, 1994, **3**, 294–299.
13. Thompson, J. D., Gibson, T. J., Plewniak, F., Jeanmougin, F. and Higgins, D. G., The ClustalX windows interface: flexible strategies for multiple sequence alignment aided by quality analysis tools. *Nucleic Acids Res.*, 1997, **25**, 4876–4882.
14. Saitou, N. and Nei, M., The neighbor-joining method: a new method for reconstructing phylogenetic trees. *Mol. Biol. Evol.*, 1987, **4**, 406–425.
15. Tamura, K., Dudley, J., Nei, M. and Kumar, S., MEGA4: Molecular Evolutionary Genetics Analysis (MEGA) software version 4.0. *Mol. Biol. Evol.*, 2007, **24**, 1596–1599.
16. Huelsenbeck, J. P. and Ronquist, F., MRBAYES: Bayesian inference of phylogeny. *Bioinforma*, 2001, **17**, 754–755.
17. Moritz, C. and Cicero, C., DNA barcoding: promise and pitfalls. *PLoS Biol.*, 2004, **2**, 1529–1531.
18. Bradley, R. D. and Baker, R. J., A test of the genetic species concept: cytochrome *b* sequences and mammals. *J. Mammal.*, 2001, **82**, 960–973.
19. Lemer, S., Aurelle, D., Vigliola, L., Durand, J. D. and Borsa, P., Cytochrome *b* barcoding, molecular systematics and geographic differentiation in rabbit fishes (Siganidae). *C. R. Biol.*, 2007, **330**, 86–94.
20. Aliabadian, M., Kaboli, M., Nijmnan, V. and Vences, M., Molecular identification of birds: performance of distance-based DNA barcoding in three genes to delimit parapatric species. *PLoS ONE*, 2009, **4**, e4119 1–8.
21. McAllan, I. A. W. and Bruce, M. D., *The Birds of New South Wales: A Working List*, Biocon Research Group in association with the New South Wales Bird Atlassers, Turrumurra, NSW, 1988.
22. Rasmussen, P. C. and Anderton, J. C., *Birds of South Asia. The Ripley Guide*, Smithsonian Institution and Lynx Edicions, 2005.

ACKNOWLEDGEMENTS. We thank Sivashankaran for helping us collect samples from Gujarat. We also thank the officials of various zoos in India for providing us with samples of the captive birds. This study was funded by the Department of Biotechnology, New Delhi and the Central Zoo Authority, India.

Received 2 September 2011; revised accepted 28 June 2012

Erratum

Terrain response to the 1819 Allah Bund earthquake in western Great Rann of Kachchh, Gujarat, India

M. G. Thakkar, Mamata Ngangom, P. S. Thakker and N. Juyal

[*Curr. Sci.*, 2012, **103**, 208–212] – In Figure 5 the ‘Food wall’ should be read as ‘Foot wall’. The corrected figure is printed below.

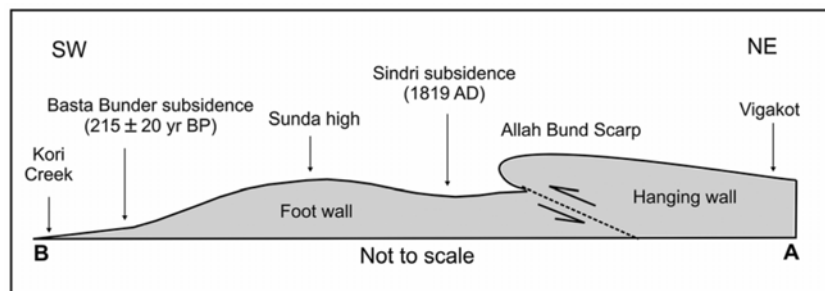


Figure 5. Schematic diagram of a cross-section from Allah Bund to Kori Creek (points A to B in Figure 1) showing a major coseismic uplift of Allah Bund accompanied by subsidiary buckling of Sindri depression and Basta Bundar subsidence separated by the Sunda uplift.